

9 Redbridge Grove, Chorlton Green, Manchester, M21 9GX



**JP&Brimelow**  
ESTATE AGENTS



# Offers In The Region Of £350,000

 2  1  1  D

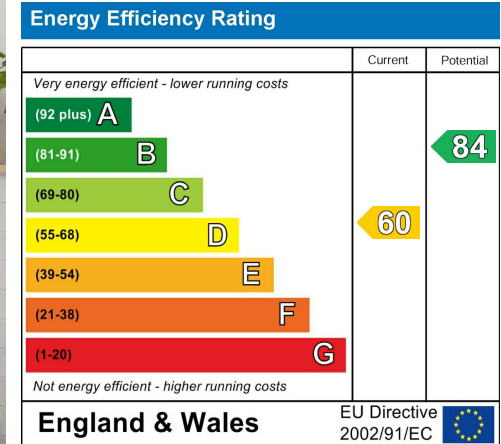
\*\*\*VIDEO TOUR AVAILABLE\*\*\* A stylishly presented, TWO DOUBLE BEDROOM, garden fronted, period, mid terrace property. Located on a quiet cul-de-sac in the heart of Chorlton Green off Crossland Road. Within easy walking distance to all the independent shops/bars/restaurants, Beech Road Park, transport links on Barlow Moor Road direct into the city centre, Chorlton Nature Reserve and fantastic primary schools. In brief, this immaculately presented accommodation comprises; a lounge complete with an attractive feature fireplace to the front aspect, a modern fitted kitchen complete with granite worktops/dining room with an inner hallway with access out into a courtyard area and a downstairs three-piece white bathroom completing the ground floor. To the first floor there is access to a fully boarded loft, the landing leads to two double bedrooms. The property benefits from a front enclosed lawned garden with a gravel area for a table and chairs, is warmed by gas fired central heating (boiler installed April 2023 with a 5 year warranty) and a hive heating system. This property will make an ideal home for either a first-time buyer or a professional couple due to its prime location.





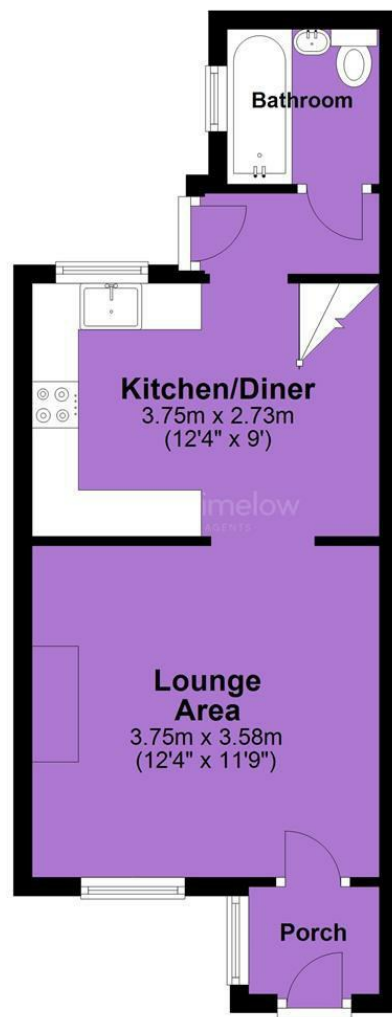


## EPC Chart



Tenure: **Freehold** Council Tax Band: **B**

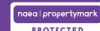
## Ground Floor



## First Floor



JP & Brimelow Estate Agents Ltd  
 430 Barlow Moor Road, Manchester, M21 8AD  
 Tel: 0161 8822233  
 E: sales@jpbrimelow.co.uk www.jpandbrimelow.co.uk



**JP&Brimelow**  
 ESTATE AGENTS

NOTICE: JP & Brimelow Estate Agents Ltd for themselves and for the vendors or lessors of this property whose agents they are give notice that:

- (i) the particulars are set out as a general outline only for the guidance of intending purchasers or lessees, and do not constitute, nor constitute part of, an offer or contract;
- (ii) all descriptions, dimensions, references to the condition and necessary permissions for use and occupation, and other details are given in good faith and are believed to be correct but any intending purchasers or tenants should not rely on them as statements or representations of fact but must satisfy themselves by inspection or otherwise as to the correctness of each of them;
- (iii) no person in the employment of JP & Brimelow Estate Agents Ltd has any authority to make or give any representation or warranty whatever in relation to this property.

@ jpandbrimelowestateagents

@jpandbrimelow